

Trace metal metabolism in plants



PLANTMETALS annual meeting



- Co-located with, and scientific symposium integrated into,
ICOBTE/ICHMET 2023

**Location: Bergische Universität
Wuppertal, Germany**

Programme:

5 September

15:00 to 17:00: Registration

18:00-23:00: "Get together"- party

6 September

8:30-12:00 Workgroup planning

12:00-14:00: Lunch break

14:00-18:00: Management committee
meeting (MC4)

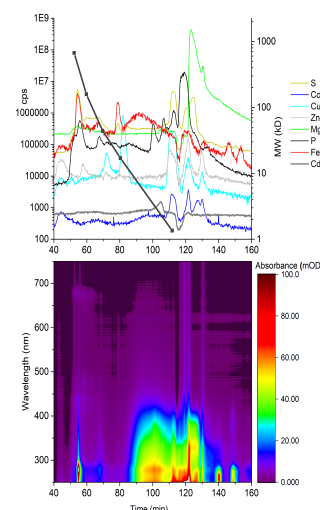
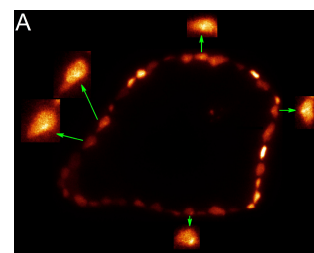
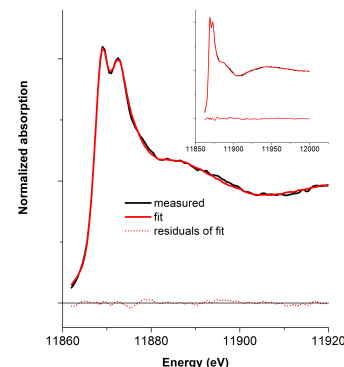
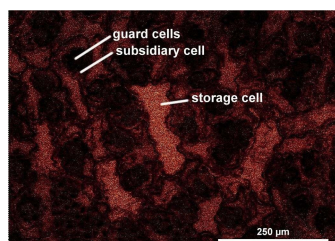
7 + 8 September

8:30-18:00: Scientific symposium integrated
as "special session" into ICOBTE /
ICHMET – time slots for oral and poster
sessions will be announced later,
coordinated with ICOBTE/ICHMET

--> registration and abstract submission
until 22 January 2023 via
ICOBTE/ICHMET website
<https://icobte-ichmet-2023.com>

**9 + 10 September (only for those
registered to ICOBTE/ICHMET)**

Continuation of ICOBTE/ICHMET incl.
excursions



Metals, Plants and People

Detailed description

The scientific symposium part of our PLANTMETALS meeting becomes a "special symposium" within the ICOBTE/ICHMET conference in Wuppertal <https://icobte-ichmet-2023.com/>
https://icobte-ichmet-2023.com/frontend/index.php?page_id=25912

Timing

- a) Afternoon-evening of 5 September 2023: Registration and welcome party of PLANTMETALS - only for PLANTMETALS members
- b) 6 September 2023: Workgroup planning and MC meeting of PLANTMETALS (half day each) - only for PLANTMETALS members
- c) 7+8 September 2023: Scientific symposium of PLANTMETALS consisting of 2 or more poster sessions and oral sessions - this can also be attended by ALL the ICOBTE/ICHMET participants, i.e. also those who are not members of PLANTMETALS.
- d) 9+10 September 2023: continuation of the ICOBTE/ICHMET conference, where PLANTMETALS members are strongly encouraged but not obliged to participate.

Attendance mode

While all PLANTMETALS members can attend the PLANTMETALS meeting by registering only for that, those PLANTMETALS members who fully register (and thus pay the conference fee) for ICOBTE/ICHMET can also go to ICOBTE/ICHMET talks and posters and social events. While this additional registration cannot be mandatory, of course this networking is the central purpose of the co-location of the meetings as discussed already before and in Ankara. The ICOBTE/ICHMET registration fee will cover not only that conference attendance but also local transportation, lunches and coffee breaks, as well as the welcome reception of ICOBTE/ICHMET for these people. Furthermore, those registering for ICOBTE/ICHMET will get a special discount for local hotels.

Financial aspects

- a) The **COST reimbursement** for those PLANTMETALS members who get reimbursement rights will cover their long-distance travel up to the MC-decided cap of 400 EUR, plus a "per diem" with 120 EUR per day for 5 days incl. the travel days. Those who get reimbursement are according to our earlier MC decision and approved GP3 budget plan (attached): "leaders + grant manager + 3 additional people from the lab of the chair for local organisation + 36 people to be selected by our general priority list (speakers, ECI's etc., but with preference to cover all full member countries in order to fulfil the MC quorum)".
- b) Our currently planned "local organiser support" (LOS) of 6,000 EUR will be used, according to COST rules, for rental of the poster walls and other facilities required for the conference in Wuppertal, making names tags etc.. AND it also has to be used for payment of the coffee breaks for those PLANTMETALS members who do NOT choose to attend ICOBTE/ICHMET: for these we will have to pay approx. 25 EUR per person per day to ICOBTE/ICHMET, while for those registered to ICOBTE/ICHMET we don't have to pay the catering. In this way, we have to do our best so that most of the PLANTMETALS members attending the co-located meeting will also fully register for ICOBTE/ICHMET not only because of the scientific aim of extended networking, but also to prevent that the additional catering costs for those PLANTMETALS members who don't attend ICOBTE/ICHMET will make us exceed the 6,000 EUR LOS.

Registration

For participating in the full co-located PLANTMETALS/ICOBTE/ICHMET event, in addition to replying with "yes" to the automated invitation mail that you have received this evening from e-COST you need to register with an abstract for the PLANTMETALS "special symposium" at the ICOBTE/ICHMET website <https://icobte-ichmet-2023.com>

IMPORTANT: you need to register there until the 22nd of January 2023! This is decisive because on 23rd of January the organisers of our symposium (my workgroup as "local organising team" + Nathalie), organisers involved in both meetings (Giancarlo, Michel, Ute) and the main organiser of ICOBTE/ICHMET (Jörg Rinklebe) will meet again and divide costs between the two meetings depending on our contribution to the co-located meeting and our total number of participants.